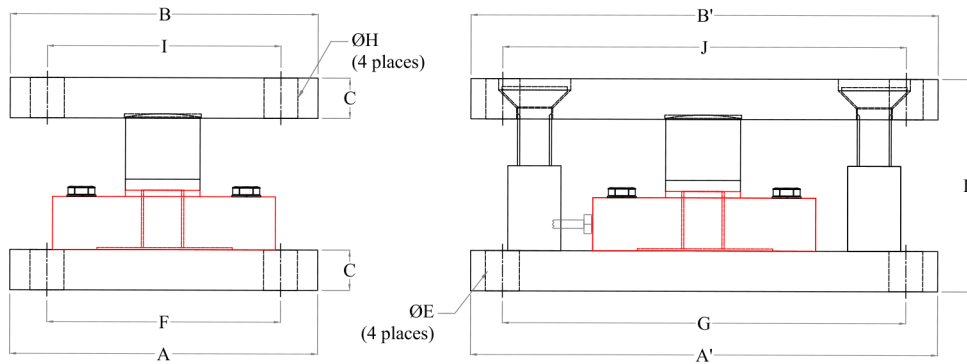


UNV - C (BIN MOUNT ASSEMBLY)



Dimension

UNV-C (BIN MOUNT ASSEMBLY)



Cap. tf	A	A'	B	B'	C	D	E	F	G	H	I	J
0.5 - 5	145	222	145	222	19	100	16	110	190	19	110	190

All dimensions are in mm.

NOTE: For (10 -100) tf capacities contact Sensotech

SENSOTECH

2/675." THE PALMS", 1st cross Street, Ranga Reddy Gardern, Neelankarai, Chennai-600041

Tel: +19- 44943305 /9176370667/7305716667

Email : sales@sensotechindia.com /sensotechindia@gmail.com

Website: www.sensomaticloadcell.com / sensomaticloadcell.net