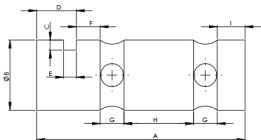




Model SHP-SP

Brand Powered by >>>

Sensotech



CAPACITY RANGE 2 TO 40 TF

CAPACITY TF	A	Φ B	C	D	E	F	G	H	I
SHP 2-5	105	35	4.5	20	6.5	12	12	35	14
SHP 10-15	152	50	4.5	30	10.5	18	18	48	20
SHP 20-30	190	65	6	32	10.5	20	25	65	22
SHP 40	256	85	6	36	12.5	35	28	89	37

WIRING SCHEMATIC	
COLOUR CODE	CONNECTION
RED	EXCITATION (+)
BLACK	EXCITATION (-)
GREEN	OUTPUT (+)
WHITE	OUTPUT (-)
SHIELD	GROUND

Performance Data

Capacity Range (in kgf)	
Capacity Range (in tf)	2/3 / 5 / 10 / 15 / 20 / 30 / 40
Nominal Sensitivity (mV/V)	1±0.25%
Zero Signal Tolerance	0±2%
Input Resistance	700±5Ω
Output Resistance	700±5Ω
Recommended Excitation Voltage	10 VDC
Maximum Excitation Voltage	25 VDC
Linearity Deviation (as % of Full Scale)	<±0.020
Repeatability (as % of Full Scale)	<±0.020
Hysteresis (as % of Full Scale)	<±0.020
Creep (as % of Full Scale) in 30 min	<±0.020
Effect of Temperature on Zero(% / o C)	±0.002
Effect of Temp. on Span (% / o C of Load)	±0.001
Compensated Temperature Range	-10 to +40°C
Operating Temperature Range	-20 to 70°C
Combined Error (as % of Full Scale)	<±0.025 max
Isolation Resistance (@ 50 VDC)	>1000 M Ω
Max. Limit Force (as % of Full Scale)	150
Breaking Force (as % of Full Scale)	300
Lateral Load Limit (as % of Full Scale)	
Protection Class	IP 68
Material of Construction	High Nickel Alloy Steel

Features

- Low Deflection & Creep
- Allow High Permissible Dynamic Load
- Direction Sensitive

Application

Shackle Pin/Axle Weighing/ Crane Scale
Process Automation, Load pin Sensor /
Quay Cranes / Stacker / Pay loader / Tipper

Sensotech: No. 2/675, "The Palms" 1st Cross Street, Ranga Reddy Garden, Neelankarai, Chennai - 600 041.

(91)-(44)-2449 4305
 (91)-(44)-6050 4460

(91)-73057 16667 (91)-98848 69600
 (91)-93805 60667 (91)-93424 78988

sales@sensomatioloadcell.in
sensotechindia@gmail.com
sensotech@vsnl.net

www.sensomatioloadcell.in
www.sensomatioloadcell.com
www.sensomatioloadcell.net