



We Sense Your Life...

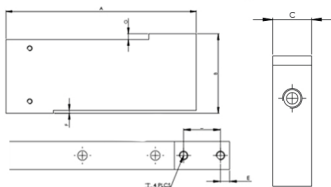


Brand Powered by >>>

Sensotech



Model HSSP



CAPACITY RANGE 11 TO 45 KGF								
CAPACITY KGF	A	B	C	D	E	F	G	T
HSSP 11-45	152.5	63	19	25.4	6.3	2.3	4.5	M 6 X 1

WIRING SCHEMATIC	
COLOUR CODE	CONNECTION
RED	EXCITATION (+)
BLACK	EXCITATION (-)
GREEN	OUTPUT (+)
WHITE	OUTPUT (-)
SHIELD	GROUND

Performance Data

Capacity Range (inKgf)	4.5/11/22.5/45
Capacity Range (in tf)	
Nominal Sensitivity (mV/V)	2±10%
Zero Signal Tolerance	0±2%
Input Resistance	350±5Ω
Output Resistance	350±3Ω
Recommended Excitation Voltage	10 VDC
Maximum Excitation Voltage	15 VDC
Linearity Deviation (as % of Full Scale)	<±0.017
Repeatability (as % of Full Scale)	<±0.017
Hysteresis (as % of Full Scale)	<±0.017
Creep (as % of Full Scale) in 30 min	<±0.020
Effect of Temperature on Zero(% / o C)	±0.002
Effect of Temp. on Span (% / o C of Load)	±0.001
Compensated Temperature Range	-10 to + 40°C
Operating Temperature Range	-20 to 70°C
Combined Error (as % of Full Scale)	<±0.020 max
Isolation Resistance (@ 50 VDC)	>1000 M Ω
Max. Limit Force (as % of Full Scale)	150
Breaking Force (as % of Full Scale)	300
Lateral Load Limit (as % of Full Scale)	
Protection Class	IP 67
Material of Construction	High Nickel Alloy Steel

Features

- Ultra Precision
- Low Creep
- Suitable for dynamic Weighing application
Rust proof plating

Optional

Explosion Proof Version Suitable for Group I,IIA, IIB, IIC & meet Temperature Class T4

Application

High Speed Packaging Machine/
Check Weigher & High Precision Weight
Measurement for use in Food & Pharma
industry / Concrete Batching machinery
/ Incubator Weighing, Paramedical /
Process Automation

Sensotech: No. 2/675, "The Palms" 1st Cross Street, Ranga Reddy Garden, Neelankarai, Chennai - 600 041.



+(91)-(44)-2449 4305

+(91)-(44)-6050 4460



+(91)-73057 16667 +(91)-98848 69600

+(91)-93805 60667 +(91)-93424 78988



sales@sensomaticloadcell.in
sensotechindia@gmail.com
sensotech@vsnl.net



www.sensomaticloadcell.in
www.sensomaticloadcell.com
www.sensomaticloadcell.net