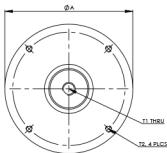
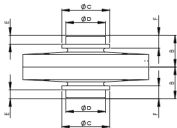




Model DS

Brand Powered by >>>

Sensotech



KONE-DI SC SENSOR								
	A	B	C	D	E	F	T1	T2
H01	100	25	38	31.5	7	9.1	M10	M5
H02	100	25	38	31.5	7	10.2	M10	M5

WIRING SCHEMATIC	
COLOUR CODE	CONNECTION
RED	EXCITATION (+)
BLACK	EXCITATION (-)
GREEN	OUTPUT (+)
WHITE	OUTPUT (-)
SHIELD	GROUND

Performance Data

Capacity Range (in Kgf)	450
Capacity Range (in Tf)	
Nominal Sensitivity (microV/V)	450 ± 25 %
Zero Signal Tolerance	0±3%
Bridge Resistance	350 Ω (nominal)
Recommended Excitation Voltage	10 VDC
Maximum Excitation Voltage	15 VDC
Linearity Deviation (as % of Full Scale)	< ± 0.017
Repeatability (as % of Full Scale)	< ± 0.017
Hysteresis (as % of Full Scale)	< ± 0.017
Creep (as % of Full Scale) in 30 min	< ± 0.020
Effect of Temperature on Zero(% / o C)	± 0.002
Effect of Temp. on Span(% / o C of Load)	± 0.001
Compensated Temperature Range	-10 to +40 C
Operating Temperature Range	-20 to 70 C
Combined Error (as % of Full Scale)	< ± 0.23 max
Isolation Resistance (@ 50 VDC)	>1000 M Ω
Max. Limit Force (as % of Full Scale)	150
Breaking Force (as % of Full Scale)	300
Lateral Load Limit (as % of Full Scale)	
Protection Class	IP 67
Material of Construction	Alloy Steel With ENP
Cable length	6 meters (dual)

Features

- Low Profile Design
- Low Deflection & Creep
- Excellent Overload Capability

Application

- For Passenger / Goods Elevator.
- Compression Testing

Sensotech: No. 2/675, "The Palms" 1st Cross Street, Ranga Reddy Garden, Neelankarai, Chennai - 600 041.



+(91)-(44)-2449 4305

+(91)-(44)-6050 4460



+(91)-73057 16667 +(91)-98848 69600

+(91)-93805 60667 +(91)-93424 78988



sales@sensomaticloadcell.in
sensotechindia@gmail.com
sensotech@vsnl.net



www.sensomaticloadcell.in
www.sensomaticloadcell.com
www.sensomaticloadcell.net