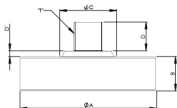
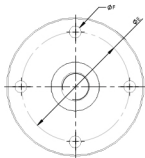




Model BTS



CAPACITY RANGE 2 TO 50 TF								
CAPACITY TF	A	B	ΦC	D	D'	E	F	T
BTS-2.5	106	32	34	25	5	65	10.5	M16 X 1.5
BTS 10-25	122	47	42	25	7	95	10.5	M24 X 1.5
BTS 50	150	51	42	25	7	95	10.5	M24 X 1.5

WIRING SCHEMATIC	
COLOUR CODE	CONNECTION
RED	EXCITATION (+)
BLACK	EXCITATION (-)
GREEN	OUTPUT (+)
WHITE	OUTPUT (-)
SHIELD	GROUND

Performance Data

Capacity Range (in kgf)	
Capacity Range (in lf)	2.5/10/15/20/30/40/50
Nominal Sensitivity (mV/V)	1.5±0.25%
Zero Signal Tolerance	0±2%
Input Resistance	350±5Ω
Output Resistance	350±3Ω
Recommended Excitation Voltage	10 VDC
Maximum Excitation Voltage	18 VDC
Linearity Deviation (as % of Full Scale)	<±0.025
Repeatability (as % of Full Scale)	<±0.025
Hysteresis (as % of Full Scale)	<±0.025
Creep (as % of Full Scale) in 30 min	<±0.020
Effect of Temperature on Zero(% / o C)	±0.002
Effect of Temp. on Span (% / o C of Load)	±0.001
Compensated Temperature Range	-10 to + 40°c
Operating Temperature Range	-20 to 70°c
Combined Error (as % of Full Scale)	<±0.04%
Isolation Resistance (@ 50 VDC)	>1000 M Ω
Max. Limit Force (as % of Full Scale)	150
Breaking Force (as % of Full Scale)	300
Lateral Load Limit (as % of Full Scale)	
Protection Class	IP 68
Material of Construction	High Nickel Alloy Steel

Features

- Low Deflection & Creep
- Allows High Permissible Dynamic Load
- High Fatigue Rated & Impact Resistant

Application

- Level Measurement in Tank/
- Hopper/Testing Machine (for use in Compression Mode Only)
- Process Automation / Mines & refinery