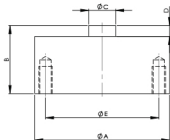




Model BTN



CAPACITY RANGE 0.5 TO 30 TF						
CAPACITY TF	ØA	B	ØC	D	ØE	T
BTN 0.5-2	50	25	10	4	42	M 5 X 0.8
BTN 5	98	40	20	5	72	M 6 X 1.0
BTN 10	98	45	20	5	72	M 6 X 1.0
BTN 20	118	50	25	7	90	M 6 X 1.0
BTN 30	138	73	25	8	115	M 10 X 1.25

WIRING SCHEMATIC	
COLOUR CODE	CONNECTION
RED	EXCITATION (+)
BLACK	EXCITATION (-)
GREEN	OUTPUT (+)
WHITE	OUTPUT (-)
SHIELD	GROUND

Performance Data

Capacity Range (in kgf)	500
Capacity Range (in tf)	2/3/5/10/20/30
Nominal Sensitivity (mV/V)	1.5±0.25%
Zero Signal Tolerance	0±2%
Input Resistance	350±5Ω
Output Resistance	350±3Ω
Recommended Excitation Voltage	12 VDC
Maximum Excitation Voltage	18 VDC
Linearity Deviation (as % of Full Scale)	<±0.025
Repeatability (as % of Full Scale)	<±0.025
Hysteresis (as % of Full Scale)	<±0.025
Creep (as % of Full Scale) in 30 min	<±0.020
Effect of Temperature on Zero(% / ° C)	±0.002
Effect of Temp. on Span (% / ° C of Load)	±0.001
Compensated Temperature Range	-10 to + 40°c
Operating Temperature Range	-20 to +70°C
Combined Error (as % of Full Scale)	<±0.04%
Isolation Resistance (@ 50 VDC)	>1000 M Ω
Max. Limit Force (as % of Full Scale)	150
Breaking Force (as % of Full Scale)	300
Lateral Load Limit (as % of Full Scale)	
Protection Class	IP 67
Material of Construction	High Nickel Alloy Steel

Features

- Low Deflection&Creep
- Allows high permissible
- Dymnic Load
- High Fatigue Rated & Impact Resistant

Application

- SPM/Level Measurement/ Testing Machine(for use in compression mode only)
- Tank Weighing/ Process Automation