



*We Sense Your Life...*

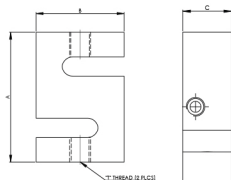


Brand Powered by >>>

**Sensotech**



**Model SB-S**



**CAPACITY RANGE 50 TO 2500 KGF**

CAPACITY KGF	A	B	C	T
SB 50-150	74	50.6	12.5	M10 X 1.25
SB 200-900	74	50.6	18.5	M12 X 1.25
SB 1000-2500	74	50.6	25.2	M12 X 1.25

**WIRING SCHEMATIC**

COLOUR CODE	CONNECTION
RED	EXCITATION (+)
BLACK	EXCITATION (-)
GREEN	OUTPUT (+)
WHITE	OUTPUT (-)
SHIELD	GROUND

## Performance Data

Capacity Range (in kgf)	50/100/150/200/250/350/500/750/900
Capacity Range (in tf)	1/1.1/1.2/1.5/1.8/2.2/2.5
Nominal Sensitivity (mV/V)	3±0.25%
Zero Signal Tolerance	0±2%
Input Resistance	350±5Ω
Output Resistance	350±3Ω
Recommended Excitation Voltage	10 VDC
Maximum Excitation Voltage	15 VDC
Linearity Deviation (as % of Full Scale)	<±0.020
Repeatability (as % of Full Scale)	<±0.020
Hysteresis (as % of Full Scale)	<±0.020
Creep (as % of Full Scale) in 30 min	<±0.020
Effect of Temperature on Zero( % / o C)	±0.002
Effect of Temp. on Span ( % / o C of Load)	±0.001
Compensated Temperature Range	-10 to + 40°C
Operating Temperature Range	-20 to 70°C
Combined Error (as % of Full Scale)	<±0.025 max
Isolation Resistance (@ 50 VDC)	>1000 M Ω
Max. Limit Force (as % of Full Scale)	150
Breaking Force (as % of Full Scale)	300
Lateral Load Limit (as % of Full Scale)	
Protection Class	IP 67
Material of Construction	High Nickel Alloy Steel

## Features

- Low Profile design
- Low Deflection & Creep
- Excellent Overload Capability
- Standardised output for Multi-Transducer Application

## Optional

Explosion Proof Version Suitable for Group I, IIA, IIB, IIC & meet Temperature Class T4

## Application

UTM, SPM, Bin/Hopper/ Hanging Scale/  
Weighfeeder/Overhead Track scale/ crane scale  
Concrete Batching Machinery /  
Tensile Testing Machine /  
Compressive Testing/paramedical / GYM  
Equipments / Dynamic Weighing / Textile  
Machinery / Automobile testing machine.

**Sensotech:** No. 2/675, "The Palms" 1st Cross Street, Ranga Reddy Garden, Neelankarai, Chennai - 600 041.



+(91)-(44)-2449 4305

+(91)-(44)-6050 4460



+(91)-73057 16667 +(91)-98848 69600

+(91)-93805 60667 +(91)-93424 78988



sales@sensomaticloadcell.in  
sensotechindia@gmail.com  
sensotech@vsnl.net



www.sensomaticloadcell.in  
www.sensomaticloadcell.com  
www.sensomaticloadcell.net