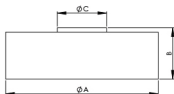
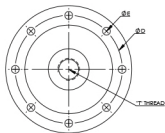


Model UNV-C



CAPACITY RANGE 0.5 TO 300 TF						
CAPACITY TF	ØA	B	ØC	ØD	ØE	T
UNV 0.5-5	105	35	34	89	6-5	M18X1.5
UNV 10-30	150	44	67	130	10-4	M32X1.5
UNV 50	200	58	90	169	13	M42X2.0
UNV 100 - 300	270	88	120	230	17	M72X3.0

WIRING SCHEMATIC	
COLOUR CODE	CONNECTION
RED	EXCITATION (+)
BLACK	EXCITATION (-)
GREEN	OUTPUT (+)
WHITE	OUTPUT (-)
SHIELD	GROUND

Performance Data

Capacity Range (in kgf)	500
Capacity Range (in tf)	1 / 2/5/10/15/20/25/30/45/50/75/100/ 200/300
Nominal Sensitivity (mV/V)	2±0.25%
Zero Signal Tolerance	0±2%
Input Resistance	700±5Ω
Output Resistance	700±5Ω
Recommended Excitation Voltage	10 VDC
Maximum Excitation Voltage	25 VDC
Linearity Deviation (as % of Full Scale)	<±0.020
Repeatability (as % of Full Scale)	<±0.020
Hysteresis (as % of Full Scale)	<±0.020
Creep (as % of Full Scale) in 30 min	<±0.020
Effect of Temperature on Zero(% / o C)	±0.002
Effect of Temp. on Span (% / o C of Load)	±0.001
Compensated Temperature Range	-10 to + 40°C
Operating Temperature Range	-20 to 70°C
Combined Error (as % of Full Scale)	<±0.03 max
Isolation Resistance (@ 50 VDC)	>1000 M Ω
Max. Limit Force (as % of Full Scale)	150
Breaking Force (as % of Full Scale)	300
Lateral Load Limit (as % of Full Scale)	
Protection Class	IP 68
Material of Construction	High Nickel Alloy Steel

Features

- Ultra High Precision
- Low Deflection & Creep
- Allow High Permissible Dynamic Load
- Build-in Mechanical Overload Protection
- High Fatigue Rated & Impact Resistant

Application

UTM/SPM/Testing machine/Crane Scale
(for use in Compression Mode only)
Process Automation / Silo
Weighing / Rope Harnessing
Automobile testing Machines / Engine
test bed / Aerospace