



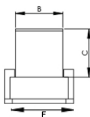
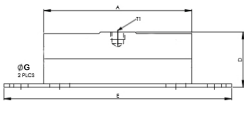
We Sense Your Life...

Brand Powered by >>>

Sensotech



Model EL-C



WIRING SCHEMATIC	
COLOUR CODE	CONNECTION
RED	EXCITATION (+)
BLACK	EXCITATION (-)
GREEN	OUTPUT (+)
WHITE	OUTPUT (-)
SHIELD	GROUND

CAPACITY RANGE TO 800 KG							
CAPACITY IN KG	A	B	C	D	E	F	T1
EL-C 800	130	31	31	48	200	45	M12 X 1.75, 7 DEEP

Performance Data

Capacity Range (In kgf)	800
Capacity Range (In lbf)	
Nominal Sensitivity (mV/V)	1±10%
Zero Signal Tolerance	0±3%
Input Resistance	350±5 Ω
Output Resistance	350±5 Ω
Recommended Excitation Voltage	10 VDC
Maximum Excitation Voltage	15 VDC
Linearity Deviation (as % of Full Scale)	<±0.020
Repeatability (as % of Full Scale)	<±0.020
Hysteresis (as % of Full Scale)	<±0.020
Creep (as % of Full Scale) in 30 min	<±0.020
Effect of Temperature on Zero(% / o C)	±0.002
Effect of Temp. on Span(% / o C of Load)	±0.001
Compensated Temperature Range	-10 to + 40°C
Operating Temperature Range	-20 to 70 ° C
Combined Error (as % of Full Scale)	<±0.023 max
Isolation Resistance (@ 50 VDC)	>1000 M Ω
Max. Limit Force (as % of Full Scale)	150
Breaking Force (as % of Full Scale)	300
Lateral Load Limit (as % of Full Scale)	
Protection Class	IP 65
Material of Construction	Alloy Steel

Features

- Excellent Overload Capability
- Low Profile Design
- Low Deflection & Creep

Application

- For Passenger / Goods Elevator.
- Low Capacity On-board Weighing

Sensotech: No. 2/675, "The Palms" 1st Cross Street, Ranga Reddy Garden, Neelankarai, Chennai - 600 041.



+(91)-(44)-2449 4305

+(91)-(44)-6050 4460



+(91)-73057 16667 +(91)-98848 69600

+(91)-93805 60667 +(91)-93424 78988



sales@sensomatioloadcell.in
sensotechindia@gmail.com
sensotech@vsnl.net



www.sensomatioloadcell.in
www.sensomatioloadcell.com
www.sensomatioloadcell.net