

SENSOMATIC



We Sense Your Life...

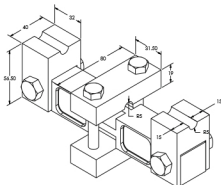
Brand Powered by >>>

Sensotech



Model DESB-RTM

WIRING SCHEMATIC	
COLOUR CODE	CONNECTION
RED	EXCITATION (+)
BLACK	EXCITATION (-)
GREEN	OUTPUT (+)
WHITE	OUTPUT (-)
SHIELD	GROUND



Performance Data

Capacity Range (in kgf)	500 / 1100 / 1350 / 2250
Capacity Range (in lbf)	4.5/5/10/11.5/15/20
Nominal Sensitivity (mV/V)	3±0.25%
Zero Signal Tolerance	0±2%
Input Resistance	700±5Ω
Output Resistance	700±3Ω
Recommended Excitation Voltage	10 VDC
Maximum Excitation Voltage	25 VDC
Linearity Deviation (as % of Full Scale)	<±0.020
Repeatability (as % of Full Scale)	<±0.020
Hysteresis (as % of Full Scale)	<±0.020
Creep (as % of Full Scale) in 30 min	<±0.020
Effect of Temperature on Zero (% / °C)	±0.002
Effect of Temp. on Span (% / °C of Load)	±0.001
Compensated Temperature Range	-10 to +40°C
Operating Temperature Range	-20 to 70°C
Combined Error (as % of Full Scale)	<±0.025 max
Isolation Resistance (@ 50 VDC)	>1000 M Ω
Max. Limit Force (as % of Full Scale)	150
Breaking Force (as % of Full Scale)	300
Lateral Load Limit (as % of Full Scale)	500:1
Protection Class	IP 68
Material of Construction	High Nickel Alloy Steel

Features

- Low Profile Design
- Excellent Overload Capability
- In-built Lightning Protection
- Low Deflection & Creep
- Allows High Permissible Dynamic Load
- Insensitive to Eccentric Load

Optional

Explosion Proof Version Suitable for Group I, IIA, IIB, IIC & meet Temperature Class T4

Application

- For Rope tension Measurement in crane / lift
- Suitable for 1/2/3/4/5/6 Ropes

Sensotech: No. 2/675, "The Palms" 1st Cross Street, Ranga Reddy Garden, Neelankarai, Chennai - 600 041.



+(91)-(44)-2449 4305

+(91)-(44)-6050 4460



+(91)-73057 16667 +(91)-98848 69600

+(91)-93805 60667 +(91)-93424 78988



sales@sensomaticloadcell.in
sensotechindia@gmail.com
sensotech@vsnl.net



www.sensomaticloadcell.in
www.sensomaticloadcell.com
www.sensomaticloadcell.net