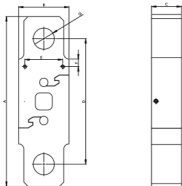


Brand Powered by >>>

Sensotech



Model CRN-L



CRANE 10 TO 15 TON							
CAPACITY IN TF	A	B	C	D	E	F	G
CRANE 10/15	400	120	37	296	90	118	36
CRANE 20/25/30	400	120	70	296	90	118	50

WIRING SCHEMATIC	
COLOUR CODE	CONNECTION
RED	EXCITATION (+)
BLACK	EXCITATION (-)
GREEN	OUTPUT (+)
WHITE	OUTPUT (-)
SHIELD	GROUND

Performance Data

Capacity Range (in kgf)	
Capacity Range (in tf)	7.5/10/15/20/25/30
Nominal Sensitivity (mV/V)	1±0.25%
Zero Signal Tolerance	0±2%
Input Resistance	350±5Ω
Output Resistance	350±5Ω
Recommended Excitation Voltage	12 VDC
Maximum Excitation Voltage	18 VDC
Linearity Deviation (as % of Full Scale)	<±0.020
Repeatability (as % of Full Scale)	<±0.020
Hysteresis (as % of Full Scale)	<±0.020
Creep (as % of Full Scale) in 30 min	<±0.020
Effect of Temperature on Zero(% / o C)	±0.002
Effect of Temp. on Span (% / o C of Load)	±0.001
Compensated Temperature Range	-10 to + 40°C
Operating Temperature Range	-20 to 70°C
Combined Error (as % of Full Scale)	<±0.03 max
Isolation Resistance (@ 50 VDC)	>1000 M Ω
Max. Limit Force (as % of Full Scale)	150
Breaking Force (as % of Full Scale)	300
Lateral Load Limit (as % of Full Scale)	
Protection Class	IP 68
Material of Construction	High Nickel Alloy Steel

Features

- Low Deflection & Creep
- Allows High Permissible Dynamic Load
- Built-in Mechanical Overload Protection
- High Fatigue Rated & Impact Resistant

Application

- Crane Scale
- Ladle Weighing / Eot & Gantry Crane
- Tension Measurement / Tower Testing
- Marine application

Sensotech: No. 2/675, "The Palms" 1st Cross Street, Ranga Reddy Garden, Neelankarai, Chennai - 600 041.



+(91)-(44)-2449 4305

+(91)-(44)-6050 4460



+(91)-73057 16667 +(91)-98848 69600

+(91)-93805 60667 +(91)-93424 78988



sales@sensomaticloadcell.in
sensotechindia@gmail.com
sensotech@vsnl.net



www.sensomaticloadcell.in
www.sensomaticloadcell.com
www.sensomaticloadcell.net