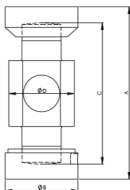




Model CMP



CAPACITY RANGE 5 TO 40 TF				
CAPACITY TF	A	ØB	C	ØD
CMP 5/10	140	77.80	107	70
CMP 20/25/30/40	183	77.80	150	70

WIRING SCHEMATIC	
COLOUR CODE	CONNECTION
RED	EXCITATION (+)
BLACK	EXCITATION (-)
GREEN	OUTPUT (+)
WHITE	OUTPUT (-)
SHIELD	GROUND

Performance Data

Capacity Range (in kgf)	
Capacity Range (in tf)	5 / 10 / 15 / 20 / 25 / 30 / 40
Nominal Sensitivity (mV/V)	2±0.25%
Zero Signal Tolerance	0±2%
Input Resistance	350±5Ω
Output Resistance	350±3Ω
Recommended Excitation Voltage	10 VDC
Maximum Excitation Voltage	18 VDC
Linearity Deviation (as % of Full Scale)	<±0.020
Repeatability (as % of Full Scale)	<±0.020
Hysteresis (as % of Full Scale)	<±0.020
Creep (as % of Full Scale) in 30 min	<±0.020
Effect of Temperature on Zero(% / o C)	±0.002
Effect of Temp. on Span (% / o C of Load)	±0.001
Compensated Temperature Range	-10 to + 40°C
Operating Temperature Range	-20 to+ 70°C
Combined Error (as % of Full Scale)	<±0.25 max
Isolation Resistance (@ 50 VDC)	>1000 M Ω
Max. Limit Force (as % of Full Scale)	150
Breaking Force (as % of Full Scale)	300
Lateral Load Limit (as % of Full Scale)	
Protection Class	IP 68
Material of Construction	High Nickel Alloy Steel

Features

- Low profile design, Low Deflection & Creep, Excellent **Overload**
- Allows High Permissible Dynamic Loading
- High Fatigue Rated & Impact Resistance
- **Impact Resistance, Self Aligning, Monolith Design offers Excellent linearity & Performance, In-built Lightning Protection**

Optional

Explosion proof Version suitable for Group I,IIA, IIB, IIC & meets

Application

Pit/Pitless Weighbridge,
Tank & Hopper Weighing
Process Automation