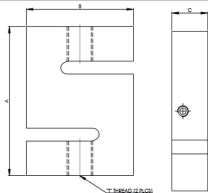




Model SB

Brand Powered by >>>

Sensotech



CAPACITY RANGE 3.5 TO 11.5 TF				
CAPACITY TF	A	B	C	T
SB 3.5-5 TF	121	89	25.2	M 20 X 1.5
SB 7 TF	138	100	31.5	M 24 X 2
SB 10-11.5 TF	150	125	45	M 30 X 2

WIRING SCHEMATIC	
COLOUR CODE	CONNECTION
RED	EXCITATION (+)
BLACK	EXCITATION (-)
GREEN	OUTPUT (+)
WHITE	OUTPUT (-)
SHIELD	GROUND

### Performance Data

Capacity Range (inKgf)	
Capacity Range (in tf)	3.5/5/7/10/11.5
Nominal Sensitivity (mV/V)	3±0.25%
Zero Signal Tolerance	0±2%
Input Resistance	350±5Ω
Output Resistance	350±3Ω
Recommended Excitation Voltage	10 VDC
Maximum Excitation Voltage	15 VDC
Linearity Deviation (as % of Full Scale)	<±0.020
Repeatability (as % of Full Scale)	<±0.020
Hysteresis (as % of Full Scale)	<±0.020
Creep (as % of Full Scale) in 30 min	<±0.020
Effect of Temperature on Zero( % / o C)	±0.002
Effect of Temp. on Span ( % / o C of Load)	±0.001
Compensated Temperature Range	-10 to + 40°C
Operating Temperature Range	-20 to 70°C
Combined Error (as % of Full Scale)	<±0.025 max
Isolation Resistance (@ 50 VDC)	>1000 M Ω
Max. Limit Force (as % of Full Scale)	150
Breaking Force (as % of Full Scale)	300
Lateral Load Limit (as % of Full Scale)	
Protection Class	IP 67
Material of Construction	High Nickel Alloy Steel

### Features

- Low Profile design
- Low Deflection & Creep
- Excellent Overload Capability
- Standardised output for
- Multi-Transducer Application

### Optional

Explosion Proof Version Suitable for Group I,IIA, IIB, IIC & meet Temperature Class T4

### Application

UTM, SPM, Bin/Hopper/Hanging Scale/  
Weightfeeder/Overhead track Scale / crane scale  
Concrete Batching Machinery /  
Tensile Testing Machine /  
Compressive Testing/paramedical / GYM  
Equipments / Dynamic Weighing /  
Automobile testing machine / Aerospace